

Hartwig ranch, shown by a sign is northeast of the corner crossing, and easy to avoid trespassing. Stay west of the sign and cross through the fence on the easement..

**Hartwig Ranch
Private - Keep Out**



Fence crossing will have black pipe over barbed wire to mark the crossing. A wood stile crossing will be constructed in the near future.

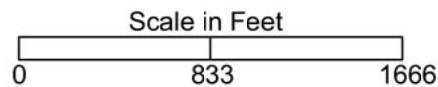
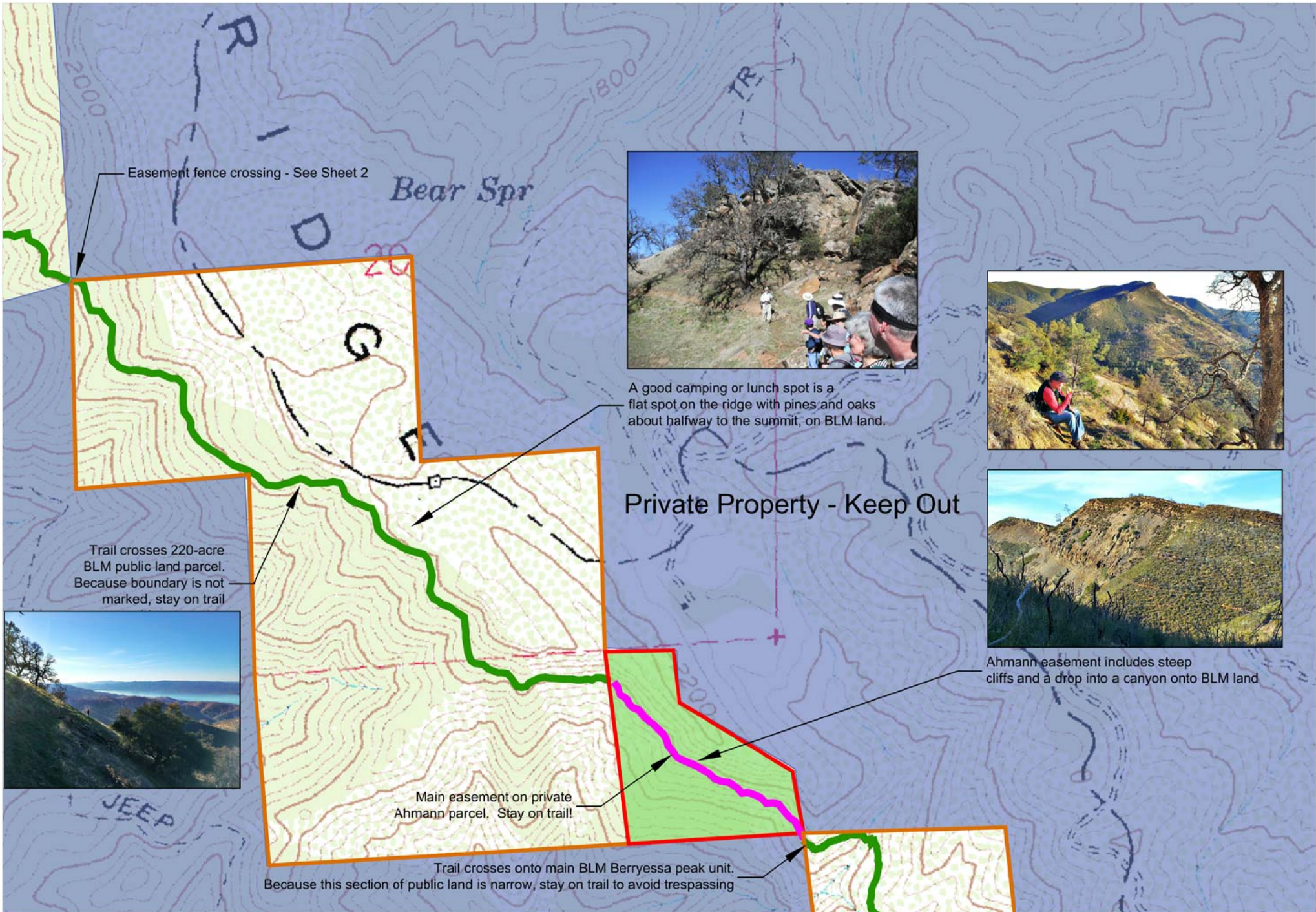


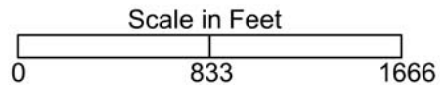
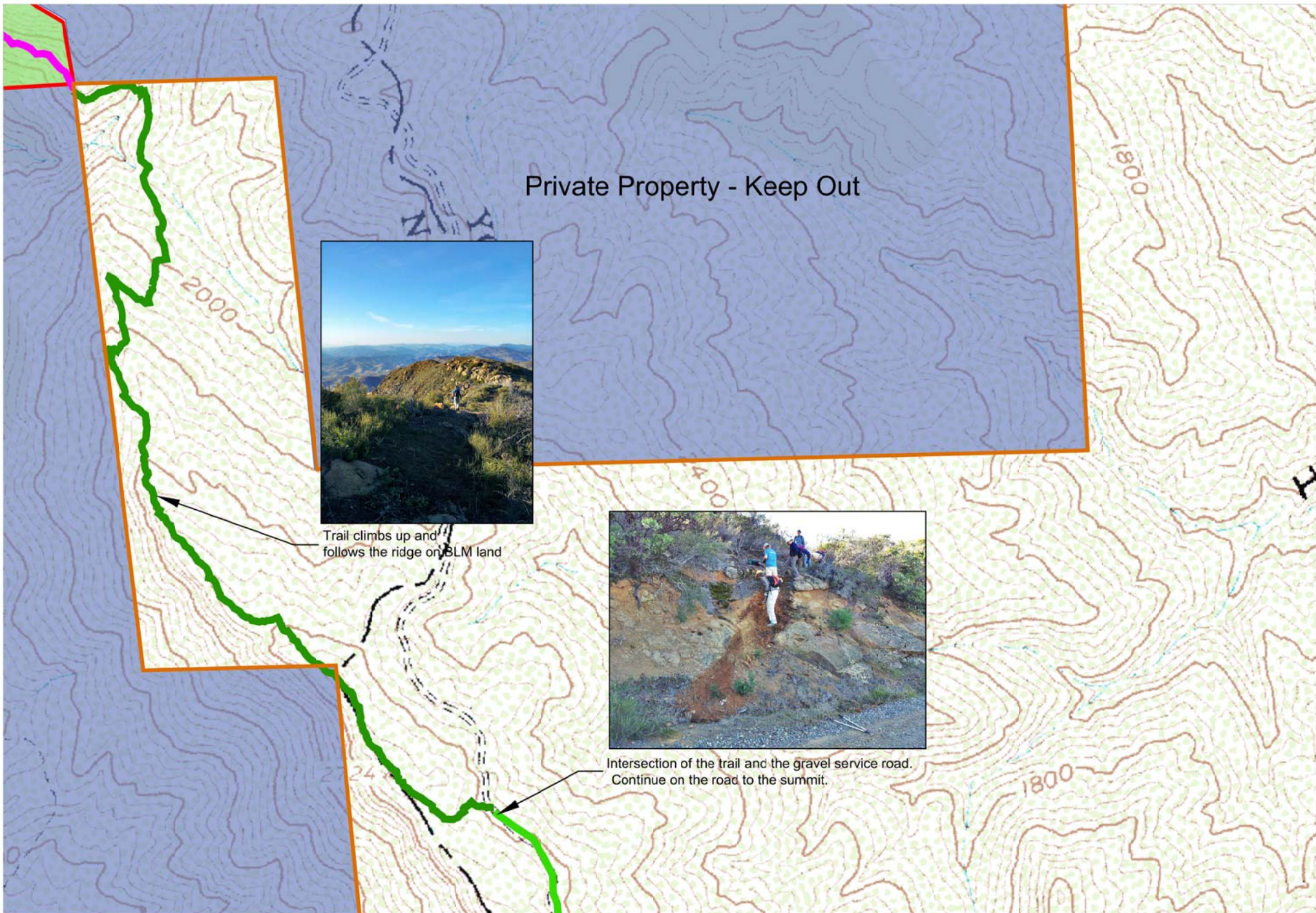
The last 500-feet of the trail before the fence crossing is steep



Two stacked rock cairns mark the route up the hill







Intersection of the trail and the gravel service road.
Continue on the road to the summit. See Sheet 4.



Walking the road to the summit,
the towers will come into view.



Berryessa Peak

Lookout 3057
Berryessa Peak
Relay Sta

